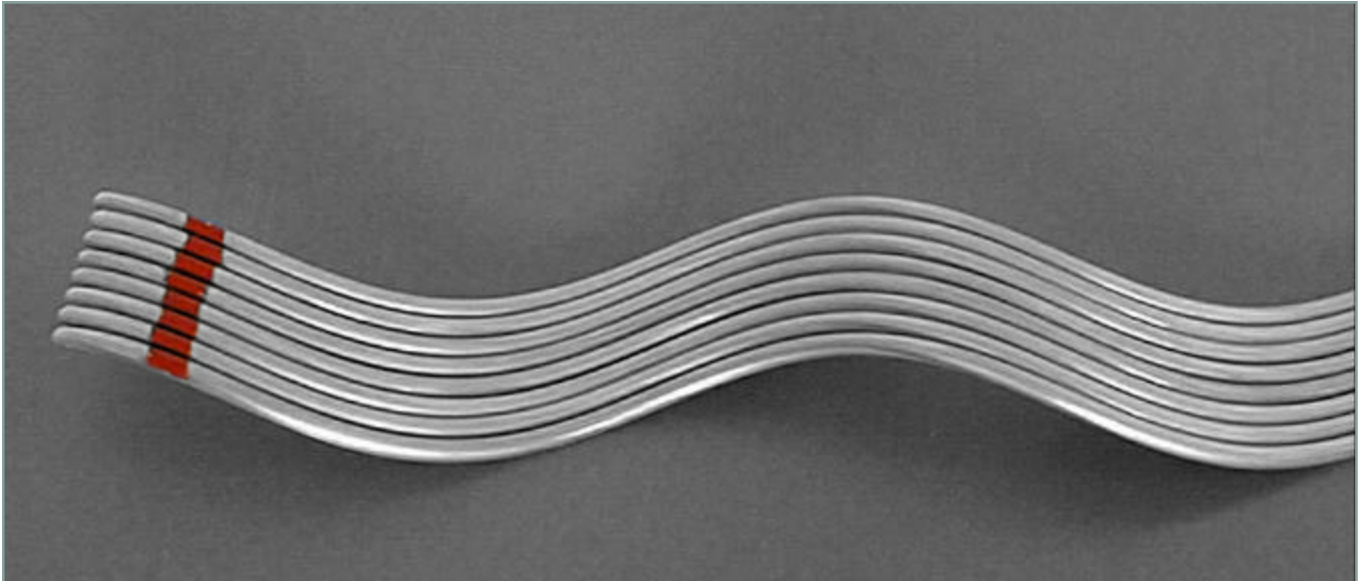


ARMOR RODS

Series 10000



GENERAL DESCRIPTION

Armor Rods are designed to protect conductors by reducing bending, compression, and abrasion at the support point, particularly where handties are used. Protection against flashover damage is also provided. Armor Rods are recommended as the minimum conductor protection for spans of 300-ft. (91m) or more.

PERFORMANCE

When no more than 50% of the outside strands on an ACSR or Aluminum conductor have been damaged at the support point, Armor Rods may be used to repair damage, thereby restoring 100% of the rated conductance and strength.

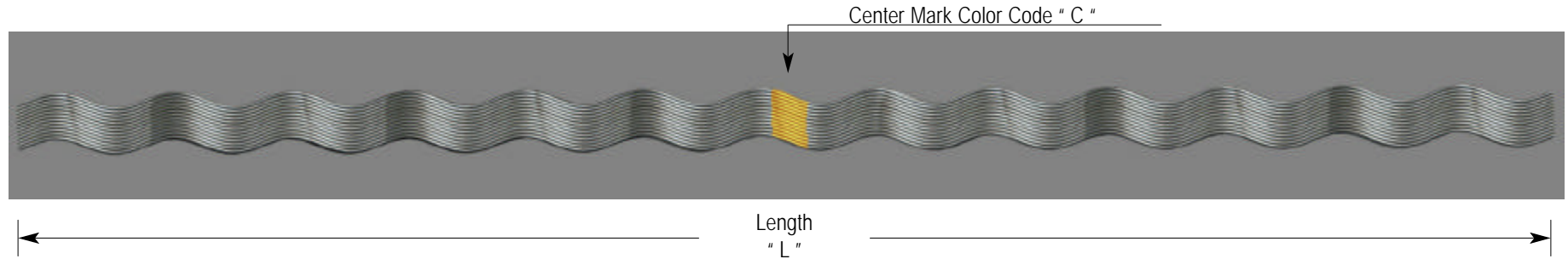
Armor Rods may be tapped over; however, the use of an oxide inhibitor is recommended.

Armor Rods are available in two lengths: one for single support and one for double support if distance between the support is 12 inches (30.5 cm) or less.

GALVANIZED STEEL ARMOR RODS

(ZINC COATED CLASS "A")

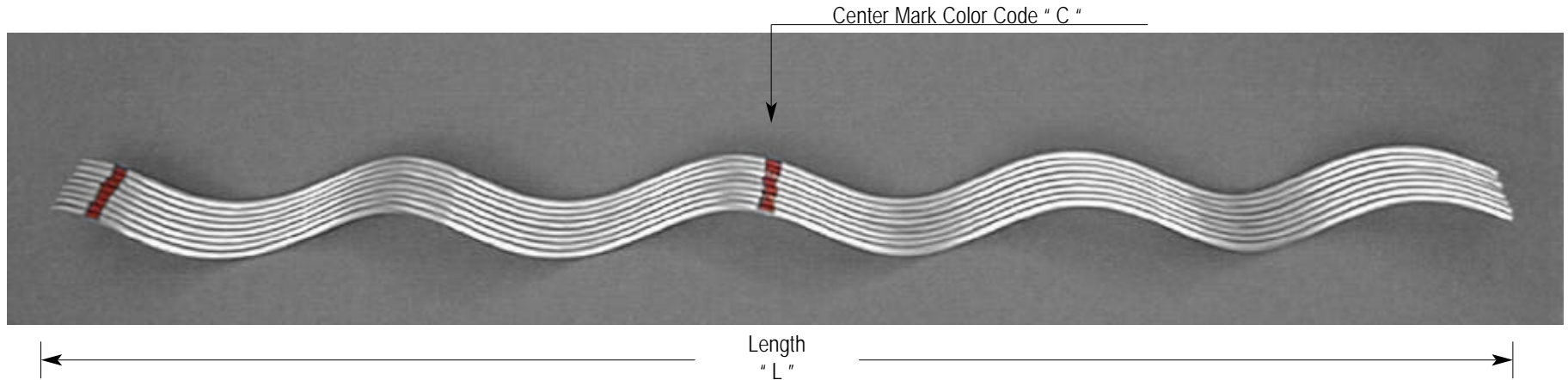
Designed for use on: ACSR, All-Aluminum, Aluminum Alloy,
Compacted ACSR, Compacted All-Aluminum, AWAC



| Catalog Number | Diameter Range (inches) | | Conductor Construction A W G - M C M | | | | Wire | | Properties | | Packaging per box | |
|----------------|-------------------------|-------|---|------------------------|------------------------|--------------------------------|---------------|-------------|-------------|-----------------------|-------------------|--------------|
| | Min | Max | ACSR Type | Aluminum Alloy Type | Compacted ACSR Type | Compacted All-Aluminum Type | Diam (inches) | Qty per set | Color " C " | Length (inches) " L " | Units | Weight (Lbs) |
| 10010 | 0.194 | 0.207 | #6 6/1 | | | | 0.086 | 9 | BLACK | 30 | 50 | 24 |
| 10050 | 0.244 | 0.259 | #4 6/1 | | | | 0.086 | 10 | ORANGE | 40 | 50 | 35 |
| 10090 | 0.309 | 0.326 | #2 6/1 | | | | 0.086 | 12 | RED | 44 | 25 | 30 |
| 10110 | 0.347 | 0.373 | #1 6/1 | | | | 0.086 | 13 | BLACK | 48 | 25 | 35 |
| 10130 | 0.39 | 0.413 | 1/0 6/1 | | | | 0.1 | 13 | YELLOW | 52 | 15 | 30 |
| 10140 | 0.437 | 0.463 | 2/0 6/1 | | | | 0.12 | 14 | BLUE | 54 | 15 | 42 |
| 10150 | 0.491 | 0.521 | 3/0 6/1 | | | | 0.12 | 14 | ORANGE | 56 | 15 | 46 |
| 10160 | 0.552 | 0.585 | 4/0 6/1 | | | | 0.12 | 15 | RED | 60 | 10 | 44 |
| 10220 | 0.633 | 0.646 | 266.8 6/7, 266.8 26/7, 300 18/1 | | | | 0.14 | 15 | GREEN | 64 | 10 | 47 |
| 10240 | 0.68 | 0.7 | 300 26/7, 300 30/7, 336 18/1 | | | | 0.16 | 14 | RED | 68 | 10 | 60 |
| 10250 | 0.721 | 0.741 | 336.4 26/7, 336.4 30/7 | | | | 0.16 | 15 | YELLOW | 72 | 10 | 68 |

ALUMINUM CLAD STEEL ARMOR RODS

Designed for use on: Aluminum Clad Steel Strands



| Catalog Number | Diameter Range (inches) | | Conductor Construction AWG - MCM | Wire | | Properties | | Packaging per box | |
|----------------|-------------------------|-------|-------------------------------------|---------------|-------------|-------------|-----------------------|-------------------|--------------|
| | Min | Max | | Diam (inches) | Qty per set | Color " C " | Length (inches) " L " | Units | Weight (Lbs) |
| | | | Aluminum Clad Steel | | | | | | |
| 12110 | 0.169 | 0.178 | 3 #12AW | 0.1 | 7 | ORANGE | 40 | 50 | 31 |
| 12111 | 0.169 | 0.178 | 3 #12AW | 0.1 | 7 | ORANGE | 52 | 50 | 38 |
| 12120 | 0.196 | 0.207 | 3 #11AW | 0.1 | 7 | BLACK | 40 | 50 | 31 |
| 12121 | 0.196 | 0.207 | 3 #11AW | 0.1 | 7 | BLACK | 52 | 50 | 38 |
| 12130 | 0.218 | 0.225 | 3 #10AW, 4-M AW | 0.1 | 8 | GREEN | 40 | 50 | 35 |
| 12131 | 0.218 | 0.225 | 3 #10AW, 4-M AW | 0.1 | 8 | GREEN | 52 | 50 | 43 |
| 12140 | 0.237 | 0.249 | 7 #12AW, 1/4", 6-M AW, 3 #9AW | 0.1 | 9 | YELLOW | 40 | 50 | 39 |
| 12141 | 0.237 | 0.249 | 7 #12AW, 1/4", 6-M AW, 3 #9AW | 0.1 | 9 | YELLOW | 52 | 50 | 49 |
| 12150 | 0.264 | 0.277 | 7 #11AW, 9/32", 8-M AW, 3 #8AW | 0.11 | 9 | BLUE | 42 | 25 | 27 |

ALUMINUM CLAD STEEL ARMOR RODS

| Catalog Number | Diameter Range (inches) | | Conductor Construction A W G - M C M | Wire | | Properties | | Packaging per box | |
|----------------|-------------------------|-------|---|---------------|-------------|-------------|-----------------------|-------------------|--------------|
| | Min | Max | | Diam (inches) | Qty per set | Color " C " | Length (inches) " L " | Units | Weight (Lbs) |
| 12151 | 0.264 | 0.277 | 7 #11AW, 9/32", 8-M AW, 3 #8AW | 0.11 | 9 | BLUE | 54 | 25 | 34 |
| 12160 | 0.296 | 0.314 | 7 #10, 5/16", 10-M AW, 3 #7AW | 0.11 | 9 | BLACK | 46 | 25 | 29 |
| 12161 | 0.296 | 0.314 | 7 #10, 5/16", 10-M AW, 3 #7AW | 0.11 | 9 | BLACK | 58 | 25 | 35 |
| 12170 | 0.334 | 0.352 | 7 #9AW, 11/32", 12.5-M AW, 3 #6AW | 0.11 | 10 | YELLOW | 50 | 25 | 33 |
| 12171 | 0.334 | 0.352 | 7 #9AW, 11/32", 12.5-M AW, 3 #6AW | 0.11 | 10 | YELLOW | 62 | 25 | 41 |
| 12180 | 0.373 | 0.392 | 7 #8AW, 3/8", 3 #5AW | 0.13 | 10 | ORANGE | 50 | 25 | 44 |
| 12181 | 0.373 | 0.392 | 7 #8AW, 3/8", 3 #5AW | 0.13 | 10 | ORANGE | 62 | 25 | 52 |
| 12190 | 0.409 | 0.425 | 18-M AW | 0.13 | 11 | BLACK | 54 | 25 | 52 |
| 12191 | 0.409 | 0.425 | 18-M AW | 0.13 | 11 | BLACK | 66 | 25 | 64 |
| 12200 | 0.426 | 0.45 | 7 #7AW, 7/16", 20-M AW | 0.13 | 12 | GREEN | 56 | 25 | 59 |
| 12201 | 0.426 | 0.45 | 7 #7AW, 7/16", 20-M AW | 0.13 | 12 | GREEN | 68 | 25 | 82 |
| 12210 | 0.477 | 0.504 | 7 #6AW, 1/2" | 0.14 | 11 | BLUE | 56 | 20 | 52 |
| 12211 | 0.477 | 0.504 | 7 #6AW, 1/2" | 0.14 | 11 | BLUE | 68 | 20 | 61 |
| 12220 | 0.535 | 0.565 | 7 #5AW, 9/16" | 0.16 | 12 | YELLOW | 60 | 10 | 39 |
| 12221 | 0.535 | 0.565 | 7 #5AW, 9/16" | 0.16 | 12 | YELLOW | 72 | 10 | 46 |
| 12230 | 0.593 | 0.625 | 7 #4AW, 5/8" | 0.182 | 11 | BLACK | 60 | 10 | 59 |
| 12231 | 0.593 | 0.625 | 7 #4AW, 5/8" | 0.182 | 11 | BLACK | 72 | 10 | 68 |
| | | | | | | | | | |
| | | | | | | | | | |
| | | | | | | | | | |